

Supplementary Information

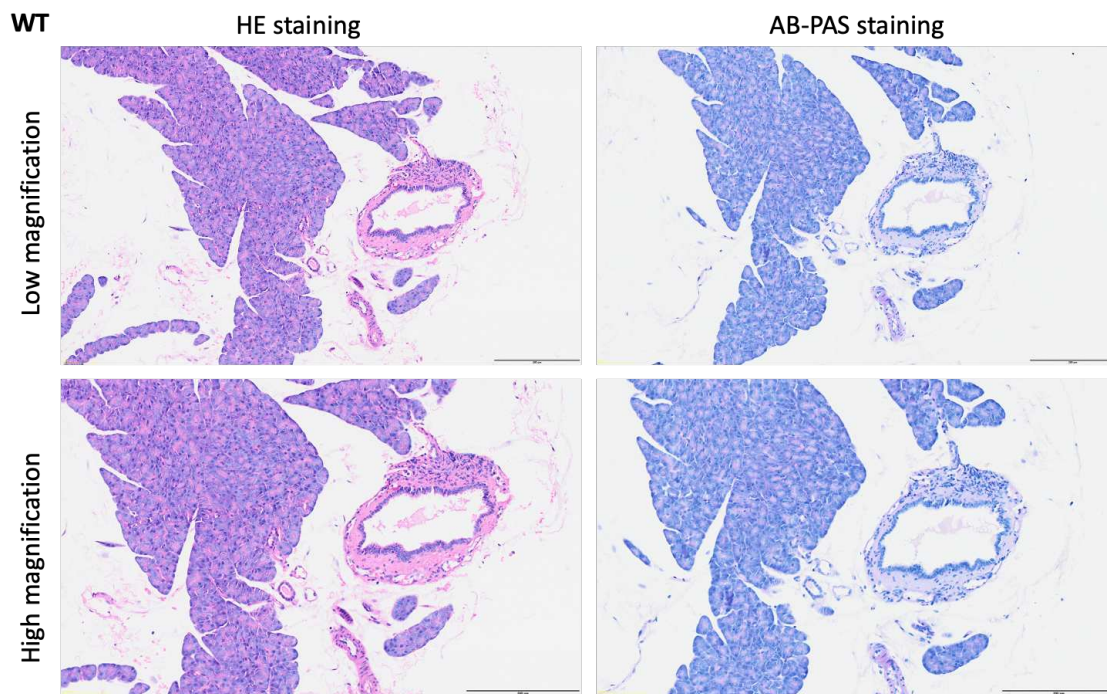
Title

Young rabbits exhibit endocrine pathology in a model of cystic fibrosis

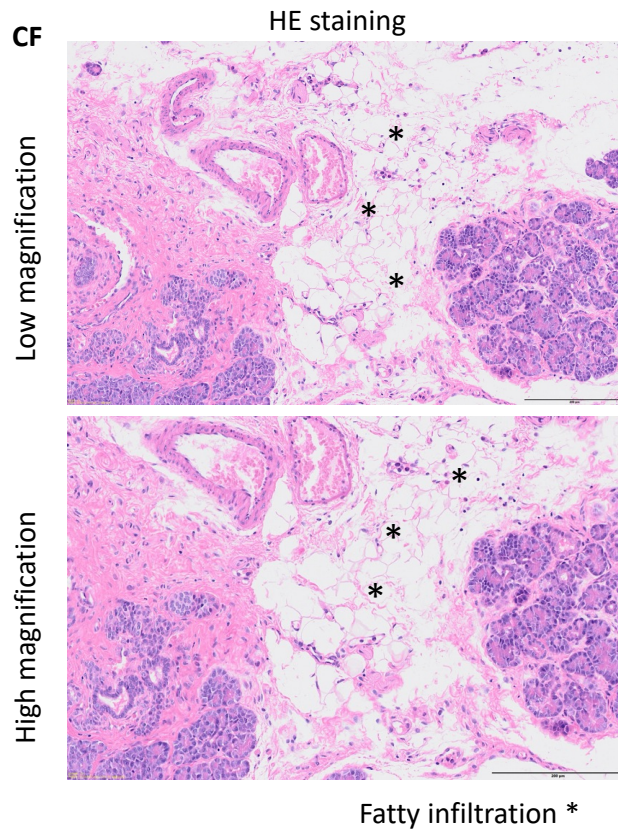
Authors

Xiubin Liang¹, Xia Hou¹, Y. Eugene Chen¹, Jian-Ping Jin², Kezhong Zhang³, Jie Xu^{1,*}

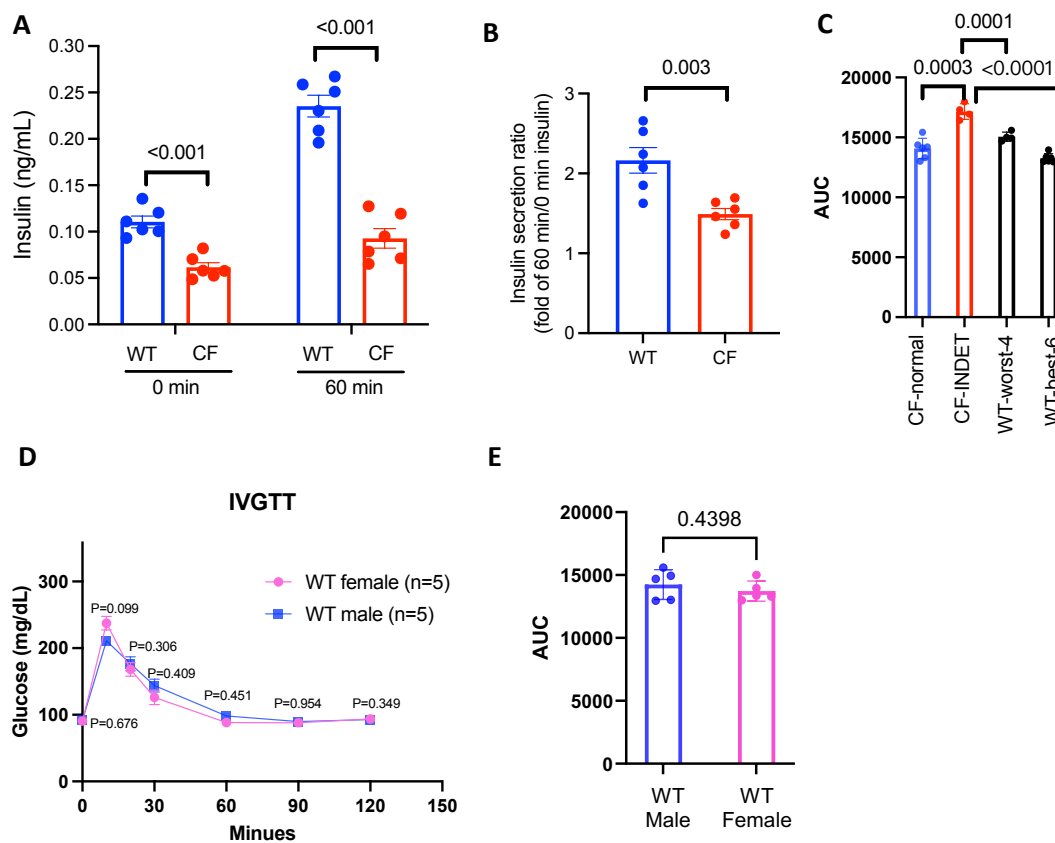
Supplementary Figure 1. HE and AB-PAS staining of pancreatic tissues of WT rabbits.



Supplementary Figure 2. Fatty infiltration is observed in CF rabbit pancreas. *indicates representative areas of fatty infiltration.



Supplementary Figure 3. Insulin levels and IVGTT curves of CF and WT rabbits. (A) Insulin levels in WT and CF rabbits before (0 min) and 60 min after glucose administration in the IVGTT test. (B) Relative fold change of insulin levels calculated as the insulin level at 60 Min after glucose administration over that before glucose administration (0 min) of WT and CF rabbits. (C) AUC of IVGTT curves of CF rabbits that don't show signs of INDET (non-INDET), CF rabbits that show signs of INDET (INDET-like), WT rabbits that have the highest four AUC values (WT-worst-4), WT rabbits that have the lowest six AUC values (WT-best-6). (D) IVGTT curves between WT female and male animals. P values indicate statistical difference at a given time point between the two groups of animals. (E) AUCs of the IVGTT curves of the WT male and female rabbits.



Supplementary Figure 4. EF-1 values of the daytime feces collected from WT and CF rabbits.